



# 3D LexiGlobe

Discover the world through your smartphone or tablet in moving 3D images. The app explains interesting facts in picture & sound. Relief globe, illuminated country map.



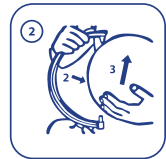
## Step 1. Install Battery



Lift out the battery-chamber from the globe and open the cover by removing the screw, then replace the old batteries by new AA batteries observing the polarity. Close the cover and tighten the screw.

Required: 2 x 1,5 V «AA». Batteries not included.

## Step 2. Assemble Globe



- 1) Unplug the globe and carefully pull up the meridian arc until the axel comes out of the globe (See picture 1).
- 2) Hold the meridian arc up and push the globe forward, lift out the globe with battery-chamber from the lamp base (pic 2). Be careful, not to scratch the globe with the axel!
- 3) Attach globe bubble to the foot screwing the base foot (pic.3).

## Step 3. Download application IQ GLOBE



**IQ Globe**

**System requirements:** Android OS 5.1 or higher  
Apple iOS 11.0 or higher  
RAM - 2.0Gb minimum

## Step 4. Start application IQ GLOBE



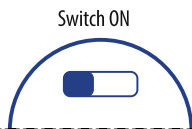
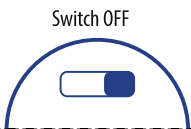
Enter the password:

**iqglobe**



Scan the globe under a bright smooth ambient light. Keep the tablet at a distance of 30cm from globe. Hold steady for a few seconds until AR effect appears.

## Step 5. Switch ON-OFF Battery



### USER MANUAL

Never use the globe if it is damaged.  
Protect the globe from falling, do not expose the globe to heating devices  
The globe may only be repaired by qualified personnel.

### CLEANING INSTRUCTION

Clean the surface of the globe from dirt with a soft dry cloth. Do not use strong detergents, window cleaners, abrasive detergents, solvent or alcohol based products. They can damage the surface of the globe.  
Keep battery compartment away from dust and moisture.

### ATTENTION!

- Batteries should be replaced only by an adult!
- Never use the globe if it is damaged.
- Do not let the globe and the globe package come in touch with children's mouth mucous membrane in order to avoid allergic reactions.
- Batteries should be replaced only by an adult person.
- Do not mix new batteries with old batteries or batteries of different types.
- Do not charge non-chargeable batteries.
- The batteries should not be short-circuited.
- Do not expose the used batteries to an open flame!

### Symbol striked out garbage bin:

The pictured symbol of a striked out garbage bin indicates that empty batteries, accumulators, cell batteries and batteries originating from equipment etc. do not belong in domestic garbage, for they will harm the environment and public health. Please help protecting the environment and public health by stimulating your children to treat and dispose empty batteries carefully. Dispose empty batteries at public designated areas or in designated shops. This way you are contributing to correct recycling.

Do not let children play with plastic bags in order to avoid suffocation.



**Warning!** Not suitable for children under three years.  
Suffocation hazard. Small parts. Please keep this address.



Manfred Roser  
Hofaeckerstr. 24  
91154 Roth  
Germany

